

Auralex® ProPanels™

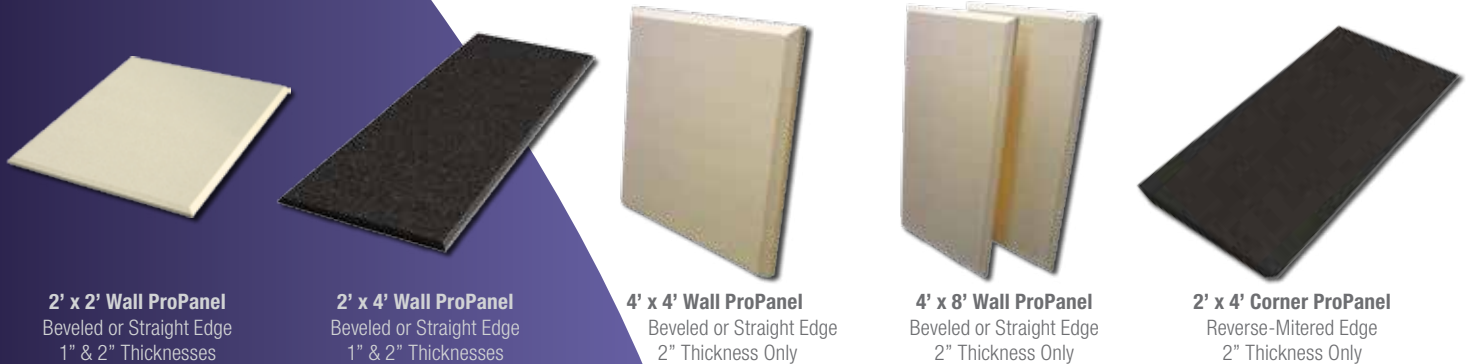


Fabric Wrapped Acoustical Absorption Panels:

- ◆ Reduce Unwanted Acoustical Reflections
- ◆ Tame Chaotic Reverberation
- ◆ Improve Speech Intelligibility
- ◆ Ceiling Cloud Versions Available
- ◆ Commercial and Residential Applications
- ◆ Choose from A Wide Variety of Custom Shapes, Sizes and Fabrics
- ◆ Class A Fire Rated: ASTM-E84



Standard Shapes & Sizes: Two Week Lead Time *(Large Orders May Be Treated As A Custom Order)*



2' x 2' Wall ProPanel
Beveled or Straight Edge
1" & 2" Thicknesses

2' x 4' Wall ProPanel
Beveled or Straight Edge
1" & 2" Thicknesses

4' x 4' Wall ProPanel
Beveled or Straight Edge
2" Thickness Only

4' x 8' Wall ProPanel
Beveled or Straight Edge
2" Thickness Only

2' x 4' Corner ProPanel
Reverse-Mitered Edge
2" Thickness Only

Installation Hardware:

Standard Impaling Clips



Standard Impaling Clips included with all Wall ProPanels

Corner Impaling Clips



Corner Impaling Clips included with Reverse-Mitered Corner ProPanels

Cloud Anchors



Cloud Anchors Included with ProPanel Clouds

Snap-On Anchors



Available upon request

Custom Panels Available: 4 Week Lead Time *(Sizes, Shapes & Fabrics available upon request)*

ProPanel - Acoustical Testing Data (NRC):

Thickness:	Octave Band Center Frequency (Hz)						NRC:
	125	250	500	1000	2000	4000	
1"	0.07	0.29	0.80	1.01	1.05	0.99	0.80
2"	0.42	0.89	1.12	1.07	1.10	1.09	1.05
3"	0.75	0.89	1.11	1.21	1.21	1.20	1.10
4"	0.87	0.87	1.24	1.26	1.25	1.25	1.15

All ProPanels have a dimensional tolerance of +/- 1/16" for thickness, edge straightness, overall length and width, squareness from corner to corner, chords, radii and diameters.

Real-World Acoustics®

1-800-959-3343 / 317-842-2600
9955 Westpoint Drive, Suite 101, Indianapolis IN USA 46256



Auralex® ProPanels™

Standard Fabrics:



Obsidian

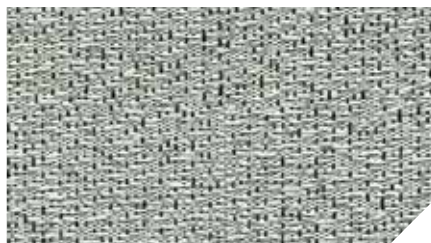


Sandstone

Premium Fabrics:



Patina



Petoskey



Cobalt



Poppy



Henna



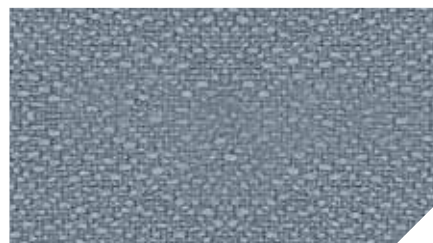
Pumice



Ebony



Mesa



Shadow



Beige

Due to the variances among different computer monitors and printers, Auralex cannot guarantee that the colors represented in this document will exactly match the colors of the products shipped. Therefore, color examples shown are for reference only. Some color variation may occur between dye lots. Color fading may occur with UV exposure over time, particularly with lighter colors.

All Copyrightable materials are © Copyright Auralex Acoustics, Inc., 1994-2014. Auralex, Total Sound Control and Real-World Acoustics are registered trademarks and ProPanel is a trademark of Auralex Acoustics, Inc. All rights reserved. Infringement will be subject to criminal prosecution. Proudly designed and manufactured in the USA.